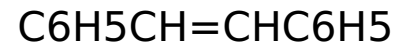


# STILBENE TRANS-



CAS: 103-30-0

EG: 203-098-5

H302 Harmful if swallowed. | H319 Causes serious eye irritation. | H411 Toxic to aquatic life with long lasting effects. | P273 Avoid release to the environment. | P280 Wear protective gloves/protective clothing/eye protection/face protection. | P301 IF SWALLOWED: | P305 IF IN EYES:



Warning