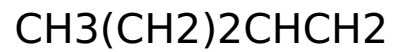


# PENTENE -1-



CAS: 109-67-1 109-67-1 109-67-1

EG: 203-694-5

H224 Extremely flammable liquid and vapour. | H412 Harmful to aquatic life with long lasting effects. |  
P210 Keep away from heat, hot surfaces, sparks, open flames and other ignition sources. No smoking. |  
P273 Avoid release to the environment.



Danger