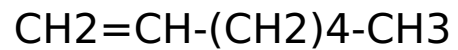


HEXENE 1-



CAS: 592-41-6

EG: 209-753-1

H225 Highly flammable liquid and vapour. | H304 May be fatal if swallowed and enters airways. | P210 Keep away from heat, hot surfaces, sparks, open flames and other ignition sources. No smoking. | P243 Take action to prevent static discharges. | P301 IF SWALLOWED: | P331 Do NOT induce vomiting.



Danger