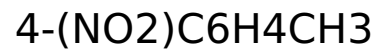


NITROTOLUENE 4-



CAS: 99-99-0

EG: 202-808-0

UN: 3446

H301 Toxic if swallowed. | H311 Toxic in contact with skin. | H331 Toxic if inhaled. | H373 May cause damage to organs through prolonged or repeated exposure. | H411 Toxic to aquatic life with long lasting effects. | P273 Avoid release to the environment. | P280 Wear protective gloves/protective clothing/eye protection/face protection. | P302 IF ON SKIN: | P304 IF INHALED: | P312 Call a POISON CENTER/doctor/... if you feel unwell.



Danger